

TOWNSEND

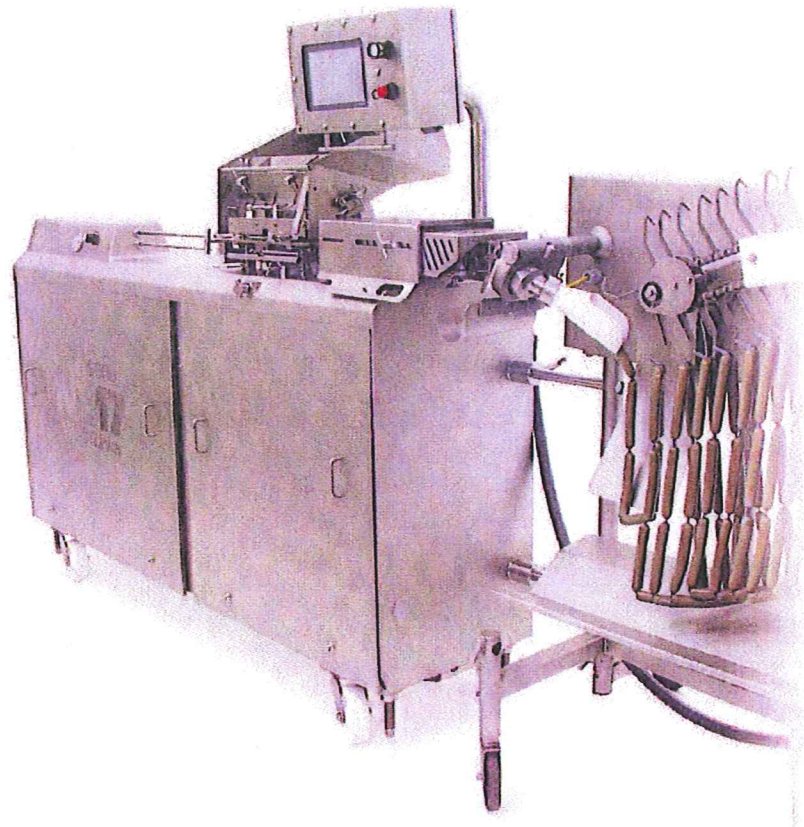
Stork Food Systems

Ver. MRJ

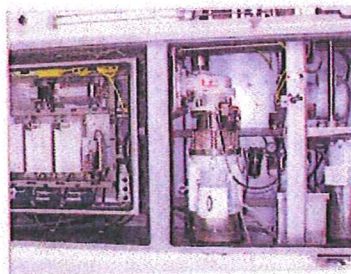
Townsend NL SMARTlinker High-Speed Sausage Linker

Fills, links and hangs cellulose and collagen casing.
One smooth operation.

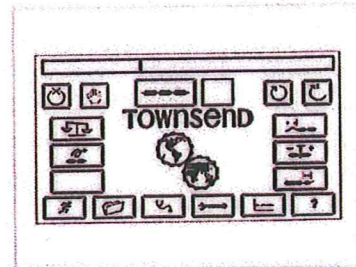
- > **UNSURPASSED WEIGHT AND LENGTH CONTROL** reduces "give-away".
- > **INCREASED CASING UTILIZATION** allows you to produce more links of sausage with every casing slug.
- > **PRODUCT INFORMATION SAVED IN THE MACHINE** enables greatly reduced changeover times.
- > **ONBOARD DIAGNOSTICS** identifies the cause of problems quickly. NL technology makes trouble-shooting easy.
- > **ADVANCED SCREEN CONTROLS** make it easy to adjust product weight. Change hang, tail or twist instantly as well.



Get four more links per strand without additional casing, labor or energy costs. That amounts to an extra 65 packages every hour at 130 strands per hour.



Designed with 42% fewer parts than previous Townsend linkers. This means less downtime and maintenance expense.

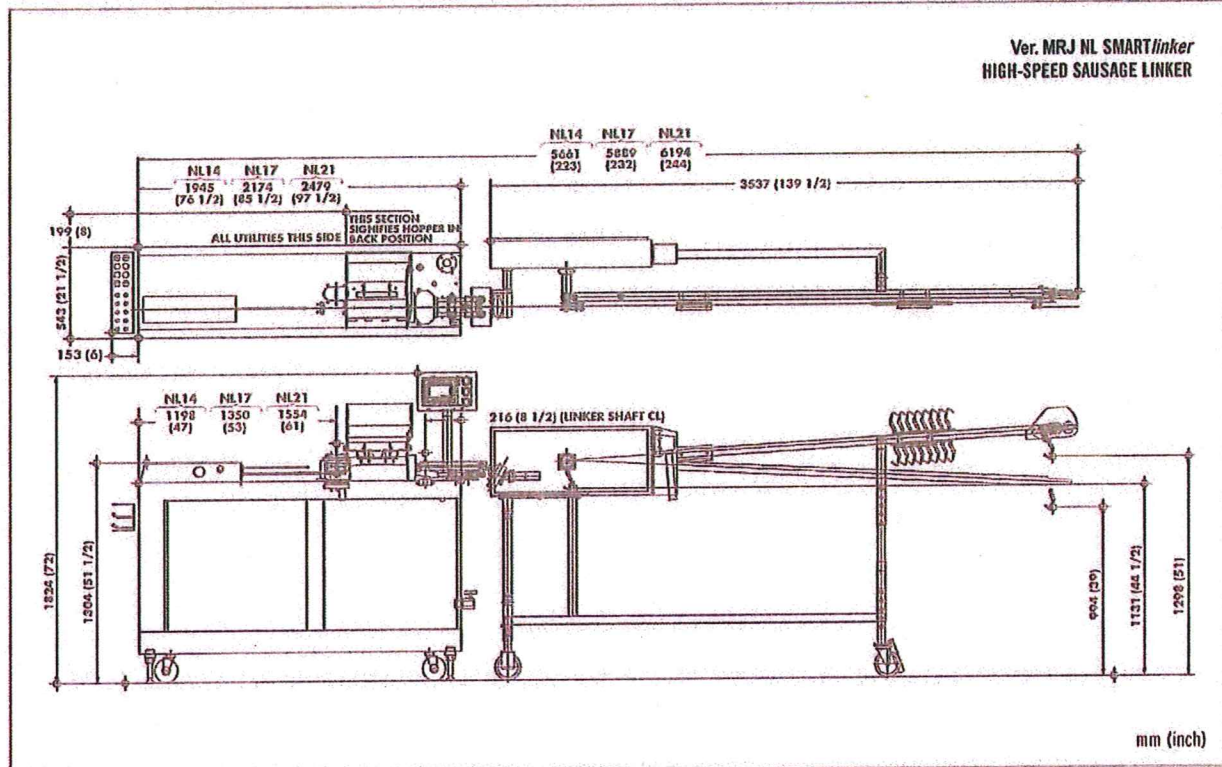


Touch screen menus include storage for 40 recipes and product parameter settings for hang, weight, twist and casing tails.

Always innovative. Always reliable.

Ver. MRJ Townsend NL SMARTlinker High-Speed Sausage Linker

Fills, links and hangs skinless or collagen sausage products.



> CASING DIAMETERS

13 mm to 34 mm
(stuffed before cooking)

> LENGTH OF SAUSAGE

25mm or more. Minimum weight of .176 oz. (5 g)

> MAXIMUM CASING SLUG LENGTH

14" for NL 14 model (14.5" 368mm)
17" for NL 17 model (17.5" 444mm)
21" for NL 21 model (22.8" 580mm)

> PRODUCTION RATE

Up to 7,000 lbs/hr (3,175 k/h) depending upon the diameter of the casing and other external factors. Maximum capacity of 3,000 units/min. Maximum stuffing pressure of 250 Psi (18 Bar)

> SHIPPING WEIGHT (CRATED)

1,855 lbs. (841 kg) for NL 14
1,918 lbs. (870 kg) for NL 17
1,950 lbs. (855 kg) for NL 21

> OPTIONS

Possibility of operating with auto scale to control weight automatically.

> MATERIALS

Exterior metal: Stainless steel
White plastic: Food-grade delrin

> LUBRICANTS

Grease: Class 1
Oil: Class 1

> AIRBORNE NOISE

Normal operation does not exceed 70 dB(A)

> AIR SYSTEM

75 psi (5,2 bar)
52 in³/cycle (0,3-0,8 liter/minute)

> WATER SYSTEM

40-60 psi (2,8-4,1 bar)
0.1-0.2 gpm (0,3-0,8 liter/minute)

> ELECTRICAL SYSTEM

208-260 VAC, 50/60 Hz 3 phase:
32 Amperes
380-480 VAC, 50/60Hz 3 phase:
16 Amperes

The Ver. MRJ NL SMARTlinker sausage linker is protected by one or more of the following United States patents: 5,842,914; 5,921,857; 5,951,391; 5,971,842; 6,066,035. Other U.S. patents pending. Patents granted and pending in principal countries throughout the world.

Specifications and equipment are subject to change without any obligation on the part of the manufacturer.

Call your Townsend Sales Engineer:
1-800-247-8609